

BusStopCV: A Real-time AI Assistant for Labeling Bus Stop Accessibility Features in Streetscape Imagery

Minchu Kulkarni^{1,2} Chu Li¹ Jaye Ahn^{1,2} Katrina Ma³
Zhihan Zhang¹ Michael Saugstad¹ Yochai Eisenberg⁴ Valerie Novack⁵
Brent Chamberlain⁵ Jon E. Froehlich¹

¹Allen School of Computer Science, University of Washington ²MHCI+D Program ³Human-Centered Design and Engineering, University of Washington ⁴Disability and Human Development, University of Illinois Chicago ⁵Landscape Architecture & Environmental Planning, Utah State University

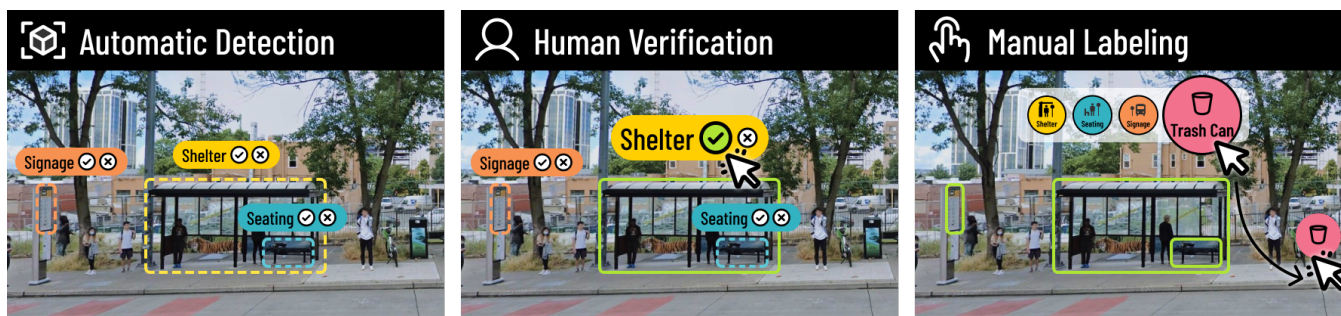


Figure 1: The BusStopCV human+AI data collection workflow: a real-time YOLOv8 CV model automatically detects bus stop features such as shelters and benches in streetscape imagery (left). Users can verify detections via lightweight click interactions (middle) or manually label features not detected by the model (right). Verified bounding boxes turn from dashed to solid lines. See demonstration video in supplementary materials.

ABSTRACT

Public transportation provides vital connectivity to people with disabilities, facilitating access to work, education, and health services. While modern navigation applications provide a suite of information about transit options—including real-time updates about bus or train arrivals—they lack data about the accessibility of the transit stops themselves. Bus stop features such as seatings, shelters, and landing areas are critical, but few cities provide this information. In this demo paper, we introduce BusStopCV, a Human+AI web prototype for scalably collecting data on bus stop features using real-time computer vision and human labeling. We describe BusStopCV’s design, custom training with the YOLOv8 model, and an evaluation of 100 randomly selected bus stops in Seattle, WA. Our findings demonstrate the potential of BusStopCV and highlight opportunities for future work.

KEYWORDS

urban accessibility, bus stops, accessible transit systems, computer vision, crowdsourcing

ACM Reference Format:

Minchu Kulkarni, Chu Li, Jaye Ahn, Katrina Ma, Zhihan Zhang, Michael Saugstad, Yochai Eisenberg, Valerie Novack, Brent Chamberlain, Jon E. Froehlich. 2023. BusStopCV: A Real-time AI Assistant for Labeling Bus Stop Accessibility Features in Streetscape Imagery. In *The 25th International ACM SIGACCESS Conference on Computers and Accessibility (ASSETS '23)*, October 22–25, 2023, New York, NY, USA. ACM, New York, NY, USA, 5 pages. <https://doi.org/10.1145/3597638.3614481>

1 INTRODUCTION

Public transportation systems provide many benefits, such as mitigating traffic congestion [9], reducing pollution [9], enhancing economic growth [6], and improving health and well-being [16]; however, significant barriers continue to limit how people with disabilities use public transportation [26]. While a city’s entire transit system requires careful assessment—from getting on a train or bus to finding accessible and safe seating—the transit stop itself is often overlooked, perceived as a mere waiting point instead of an integral part of mobility [1].

Modern navigation tools such as Google Maps [8] and Apple Maps [4] offer real-time bus information but fall short in providing data on essential bus stop accessibility features like seating availability, shelter provisioning, conditions of the landing area, and sidewalk connectivity [5]. Some cities publish open data about bus stop features; however, this practice is bespoke and limited by data collection costs and a lack of data standards [5]. In this demo paper, we introduce a new human+AI approach [3] to semi-automatically gather data on bus stops using real-time computer vision (CV) and

Permission to make digital or hard copies of part or all of this work for personal or classroom use is granted without fee provided that copies are not made or distributed for profit or commercial advantage and that copies bear this notice and the full citation on the first page. Copyrights for third-party components of this work must be honored. For all other uses, contact the owner/author(s).
ASSETS '23, October 22–25, 2023, New York, NY, USA
© 2023 Copyright held by the owner/author(s).
ACM ISBN 979-8-4007-0220-4/23/10.
<https://doi.org/10.1145/3597638.3614481>

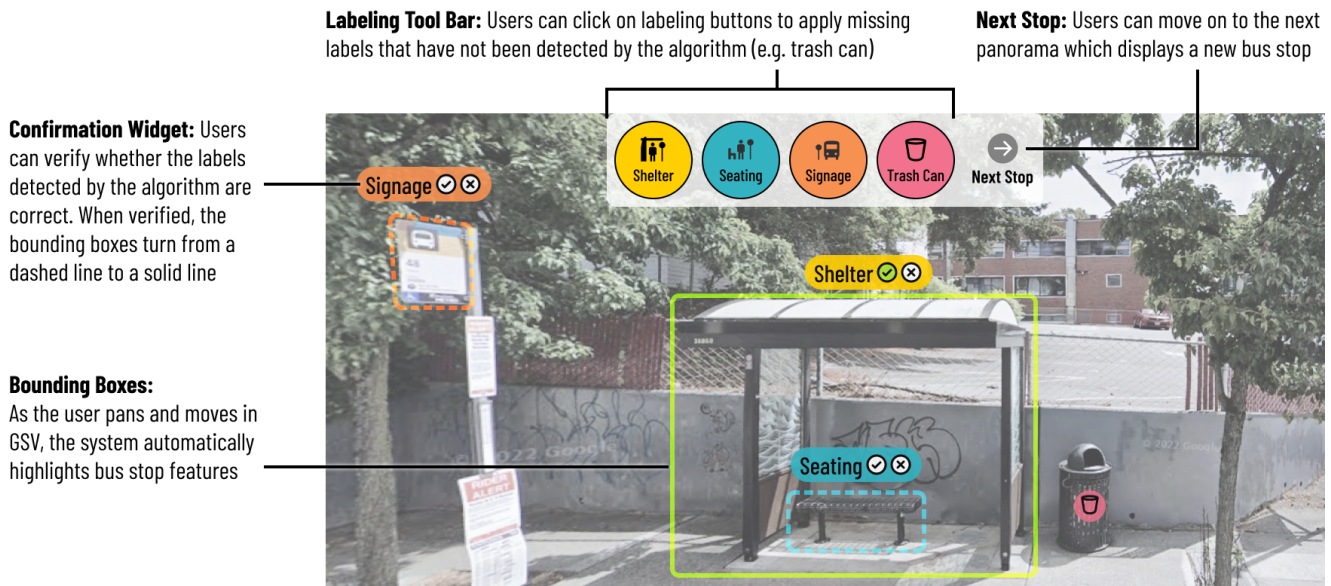


Figure 2: The BusStopCV interface showing automatic detections in dotted bounding boxes, user-confirmed automatic detections in solid bounding boxes, and a manually applied label (trash can) as a circular target.

manual verification/labeling (Figure 1). Our method seeks to streamline data collection, foster standardization, and promote greater accessibility for all public transportation users.

Our work builds on recent efforts in automatic streetscape analysis using deep learning [2, 7, 14, 15, 17, 25] as well as prior human+AI streetscape labeling tools for urban accessibility [12, 13]—all which demonstrate the potential of emerging CV models in semi-automatically identifying accessibility features in street scenes. In contrast to this growing literature, which uses *offline* computer vision for analysis, we introduce a novel tool, *BusStopCV*, that automatically identifies bus stop features in *real-time* using a custom-trained YOLOv8 model running in the browser. Human labelers can then verify and correct automatic detections and add manual labels. By running a real-time CV model directly in the browser, *BusStopCV* operates analogously to emerging real-time CV systems in augmented reality (e.g., on wearable headsets); however, with *BusStopCV*, the pixel data is streamed from precaptured streetview panoramas rather than a live camera.

Most related to our approach is the manual labeling tool, *Bus Stop CSI* [10, 11], which showed how minimally trained crowd workers could label bus stop landmarks with 87% accuracy in interactive streetview imagery. While promising, *Bus Stop CSI* focused on identifying navigational landmarks for blind and low-vision pedestrians and did not include AI-assisted labeling. We draw upon *Bus Stop CSI* and related tools (e.g., *Project Sidewalk* [20]) for a similar streetview labeling interface with the addition of real-time AI. As an initial prototype, we focused on four bus stop features: *shelters*, *seating*, *signage*, and *trash cans*, which were informed by transit accessibility literature [5, 18, 21] and our own formative interviews with 29 people. We will include landing area size, shade availability, sidewalk connectivity, and beyond in our future work.

To evaluate *BusStopCV*, we conducted two studies: first, a technical performance evaluation of the custom-trained YOLOv8 model across 661 bus stop images, demonstrating a F1 Score of ~0.9 for shelters, seating, signage, and trash cans, respectively. Second, a pilot study with one user who used the tool to label 100 bus stop locations randomly sampled in Seattle, WA. Here, *BusStopCV* was able to automatically identify 87.5% of shelters, 90.7% of seating, 85.23% of signage, and 82.86% of trash cans. The user only needed to correct 12 false positives (0.13 per bus stop) and 28 false negatives (0.31 per bus stop).

In summary, our contributions include: (1) A novel human+AI tool that uses real-time computer vision in the browser to facilitate labeling bus stop features in streetscape imagery; and (2) Initial studies demonstrating the potential of our approach (e.g., high accuracy and responsiveness) while highlighting key areas for improvement. The *BusStopCV* tool is open source and available on Github¹.

2 THE BUSSTOPCV PROTOTYPE

The overarching goal of our work is to develop a scalable crowdsourcing system that allows non-experts to quickly and accurately label bus stop accessibility features. The collected geo-located data can then be used to populate city databases (e.g., [24]), be integrated into modern mapping tools (e.g., so users can query the existence of bench availability or shelters), and support future transit planning and inclusive infrastructural development.

To design *BusStopCV*, we first reviewed literature on bus stop features [5, 18, 21] and synthesized key attributes contributing to accessibility including: (1) urban wayfinding and navigation: the presence and type of signage, connectivity to accessible sidewalks; (2) safety: lighting, high visibility; (3) street furniture: newspaper

¹*BusStopCV* online repository: <https://github.com/ProjectSidewalk/BusStopCV>

Method	Shelter			Seating			Signage			Trash Can		
	Precision	Recall	F1 Score	Precision	Recall	F1 Score	Precision	Recall	F1 Score	Precision	Recall	F1 Score
BusStopCV	92.11%	87.5%	0.897	88.64%	90.7%	0.897	97.4%	85.23%	0.909	93.55%	82.86%	0.879
YOLOv8n	0	0	N/A	100%	20.51	0.34	0	0	N/A	0	0	N/A
YOLOv8l	0	0	N/A	100%	25.64	0.408	0	0	N/A	0	0	N/A

Table 1: The technical performance results of the custom-trained YOLOv8 BusStopCV model on bus stop feature task on precision, recall, and F1 score.

boxes, poles, and trash cans, which can provide navigational landmarks [10] but can also impede travel if not appropriately positioned (4) comfort: seating, shelter, tree shade; (5) landing areas: accessible landing areas with accessible travel paths to the sidewalk.

To gain further insights on the needs and opportunities for transit accessibility tools, we performed formative interviews with 23 professionals, including metropolitan planners, occupational therapists, travel trainers, community service providers, realtors, ADA compliance professionals, and people who identified as having a disability. Additionally, six people with disabilities (PWD), who use public transportation to travel to or look for work, participated in a focus group about end product utility. All participants confirmed that currently available tools and data (e.g. Google Maps) were inadequate for incorporating accessibility into transportation planning or for trip-planning purposes. Our analysis identified the desire for up-to-date transit accessibility data and a general acceptance of using AI models for collecting data. Participants identified desired features for future development, such as accessible design of destination entrances and safe drop-off spaces for ramp deployment.

Informed by these experiences and prior work in streetscape labeling tools [10, 12, 20, 25], we iteratively designed BusStopCV, starting with sketches and Figma mockups before implementing the tool in JavaScript (frontend) and Java (backend). Unlike previous streetscape labeling tools, we centered the human+AI workflow around an AI-first approach—leveraging recent advances in CV to automatically identify and highlight bus stop accessibility features in real-time. Human input is then utilized for manual verification and correction (Figure 1). As initial work, we incorporate four label types—*shelter*, *seating*, *signage*, *trash can*—with plans to expand.

To use BusStopCV, users are "virtually transported" to bus stop locations in an immersive GSV-based labeling UI (Figure 2). As users explore the environment in GSV, our real-time CV processes the image and automatically labels bus stop features (Figure 2) with a bounding box and confirmation widget. Users can confirm (✓) or deny (×) each detection, and add their own labels at any point to correct false negatives. As the user pans, labels appear to "stick" to the underlying labeled feature, and the CV model is rerun on the current field of view to potentially add new automatic labels. Once all automatic labels have been verified and false negatives corrected (e.g., by adding manual labels), BusStopCV produces a geo-located list of bus stop locations and access features, which can be used in transit analytics and route planning tools.

2.1 The BusStopCV Model

To construct our CV subsystem, we first custom-trained a YOLOv8 model by randomly selecting 200 Seattle bus stops drawn from the

King County GIS (KCGIS) Open Data repository [24]. We ensured that all bus stops were marked active, geographically distributed, and included a variety of bus stop types with various shelters, seating, and signage. We (virtually) visited each location in GSV and took screenshots from varying distances and angles to ensure a diverse training sample. In total, we collected 661 images from 92% of the selected bus stop locations (one image per panorama). The remaining 8% of the bus stops were either completely occluded, did not have a bus stop, or failed to load the GSV panorama.

To label the training images, we used the image annotation tool *Roboflow* [19]. We traced the outline of the four label classes in each image and exported the data to YOLOv8 format. In total, our labeled dataset contained 1,707 annotations across the four label types: 433 shelters, 383 seats, 536 signs, and 355 trash cans.

Using this dataset, we trained a YOLOv8 model from scratch (no pretraining) with the *Ultralytics* [22] platform. For the settings, we used an image batch size of 16, a learning rate of 0.01, three warmup epochs, and defaults for other hyperparameters [23]. We employed the Stochastic Gradient Descent optimizer and 150 epochs to optimize the model's performance.

To train the model, we performed a random 70/20/10 split on the 661 images for training, validation, and testing. We compared our model to two pre-trained baseline models (YOLOv8n & YOLOv8l) using three standard CV metrics: Recall, Precision, and F1 score. As Table 1 shows, our model achieved impressive F1 scores of nearly 0.9 for all label classes while the baseline models were unable to detect any shelters, signage, or trash cans.

After validating model performance, we integrated the custom-trained YOLOv8 model into BusStopCV using the Open Neural Network Exchange (ONNX) runtime standard. Importantly, we aimed to implement a real-time CV engine such that the human and AI could work seamlessly together. Whenever the GSV pano loads or the user pans, we send a downsampled (640x640) image of the user's current streetscape view to the model, which then returns a list of identified features, bounding boxes, and confidence intervals. We used an IoU threshold of 0.7 and a confidence threshold of 0.4. During informal experiments, we found a processing time of 250-500ms. The size of the model was 12.2 MB.

2.2 Pilot Study

To examine the full BusStopCV workflow with CV detections and human verification/labeling, we conducted a pilot study with a single participant drawn from our research team who had not used the tool before. For the study dataset, we randomly selected 100 additional bus stops in Seattle, WA— 32 had at least one shelter, according to official KCGIS data [24].

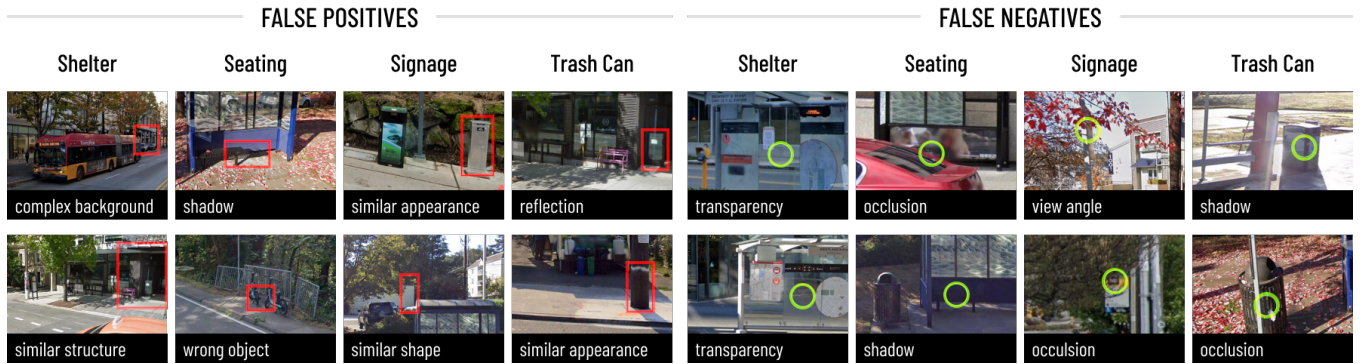


Figure 3: Representative examples of the 40 mistakes made by the YOLOv8 model during the BusStopCV pilot test: 12 false positive and 28 false negatives.

To begin the study, the participant was instructed to verify and/or manually label *all* bus stop features—shelters, seating, signage, and trash cans—at each bus stop. If a bus stop was not immediately visible when the GSV scene loaded, participants were told to ignore errant automatic detections from the model and explore the area until the bus stop was found. If multiple bus stops were visible, we asked that only the closest bus stop be labeled. Finally, we asked that each feature be labeled only once (*e.g.*, the user need not label the same bus stop feature from multiple GSV panoramas).

Once a bus stop was fully labeled, the participant clicked the "next stop" button (Figure 2). All labeling was conducted in a single study session on a 13-inch MacBook Pro with a 2.3GHz Quad-Core Intel Core i7 (2560x1600 resolution) and an Intel Iris Plus 1536MB graphics card running macOS Ventura 13.4 and Chrome v114.0.5735.198 (x86_64) in a maximized window state. The pilot study lasted roughly one hour and 15 minutes (approximately 1.2 bus stops/minute).

Study Results. In total, the participant successfully labeled 89 out of 100 initial locations, providing a total of 218 inputs (2.45 per bus stop): 178 positive verifications (true positives), 12 negative verifications (false positives), and 28 manual labels (false negatives). For the 11 locations that were unlabeled, either the bus stop was not visible because of occlusion (*e.g.* a stationary bus), it could not be found or the GSV panoramas failed to load. For 86 of the 89 labeled bus stops, the participant was able to label all features from a single GSV panorama; for the other three, the participant needed to move

around with GSV navigation to label from alternative views (*e.g.*, to avoid occlusion).

In terms of performance, BusStopCV automatically identified ~80% of all features with a remarkably low false positive and false negative rate. Across the 89 labeled stops, the user only needed to correct 12 false positives (0.13 per bus stop) and 28 false negatives (0.31 per bus stop) with *seating* having the highest false positive (FP) rate (10.4%) and *trash can* the highest false negative (FN) rate (16.2%). To further examine FP and FN performance, we conducted a qualitative assessment of all 40 errors—a representative subset is shown in Figure 3). Common sources of error include poor lighting (*e.g.*, shadows), occlusion (*e.g.*, a vehicle blocking the bus stop), complex backgrounds, and inter-class similarity.

Because BusStopCV’s YOLOv8 model runs in real-time, we were also interested in examining UI responsiveness and perceived lag. We found an average inference time—the time it took to process a GSV view and return a list of detections as bounding boxes—of 528ms. The participant stated that the inference delay "*was noticeable but just fast enough to be tolerable.*"

3 DISCUSSION AND CONCLUSION

In this paper, we introduced a new human+AI workflow and tool for rapidly and accurately labeling accessibility bus stop features in streetscape imagery. Unlike prior streetscape labeling tools [10, 11, 20], BusStopCV adopts an AI-first labeling approach, which minimizes human visual search and labeling time. Through our technical performance evaluation, we showed how our custom-trained YOLOv8 model significantly improves bus stop feature detection and our pilot study demonstrated the effectiveness and potential of the BusStopCV tool. Below, we reflect on limitations and opportunities for future work.

Limited label types. Currently, BusStopCV is configured to detect four features: shelters, seating, signage, and trash cans. However, we recognize and acknowledge that other elements such as lighting, the presence of a landing area, and sidewalk connectivity [5, 18, 21] are integral to an accessible bus stop.

CV Implementation Paradigms. When designing BusStopCV, we discussed two primary CV implementations: a pre-processed approach where our CV model would analyze all bus stop streetscape

Label Type	N (TP + FN)	TP	FN	FP	Avg. Conf. (TP)	Avg. Conf. (FP)
Shelter	40	35	5	3	95.2%	69.3%
Seating	43	39	4	5	73.8%	51.0%
Signage	88	75	13	2	83.4%	64.5%
Trash Can	35	29	6	2	91.6%	81.0%

Table 2: Pilot study results for BusStopCV’s custom-trained YOLOv8 model showing number of correct labels (N), True Positive (TP), False Positive (FP), False Negative (FN), and Average Confidence. All FPs and FNs were correctly rectified by the user.

images *a priori* and a real-time CV approach. The former reduces computation on the frontend and increases responsiveness—as the bounding boxes would be pre-computed and each bus stop would be analyzed once and only once regardless of user panning. However, the latter is more flexible, enabling our approach to work on any newly visited bus stop location. Future work should examine these tradeoffs, including frontend hardware requirements (2020 MacBook Pro used in pilot study) and Internet bandwidth.

Enhancing Model Ability. The current version of BusStopCV lacks the ability to maintain label recognition as the user navigates through different views or steps forward in GSV. This means that the system does not identify the same bus stop features when the viewing angle or position changes. Enhancing the model’s ability to ‘understand’ and ‘remember’ label information from contiguous panoramas can provide a more seamless user experience.

3.1 Conclusion

As early work, this study opens up more questions than it answers. Does our human+AI workflow present the best solution for labeling urban accessibility features and how can it be improved? Given the current constraints on feature selection, how can we expand to incorporate a wider array of features, and accommodate a broad range of bus stop designs? One potential solution lies in integrating BusStopCV into a wider ecosystem of tools, such as Project Sidewalk [20], allowing for a more comprehensive analysis of urban spaces. Additionally, how might we best facilitate the recognition of features and their relationships to one another in a way that impacts a diverse range of users (e.g., individuals with vision or mobility disabilities)? Despite the challenges and unanswered questions, we remain hopeful that our tool can help urban planners, policymakers, and advocacy groups foster a more inclusive and equitable urban future. Given the expansive availability of GSV data, this tool has significant potential to fill the gap in missing bus stop accessibility data.

4 ACKNOWLEDGMENTS

This research was supported by NSF awards #2125087 and #2236277. We are grateful to Jacqueline Kish at Shirley Ryan AbilityLab for help with the interviews.

REFERENCES

- [1] 2016. Stations & Stops. <https://nacto.org/publication/transit-street-design-guide/stations-stops/>
- [2] Marc A. Adams, Christine B. Phillips, Akshar Patel, and Ariane Middel. 2022. Training Computers to See the Built Environment Related to Physical Activity: Detection of Microscale Walkability Features Using Computer Vision. *International Journal of Environmental Research and Public Health* 19, 8 (April 2022), 4548. <https://doi.org/10.3390/ijerph19084548>
- [3] Saleema Amershi, Dan Weld, Mihaela Vorvoreanu, Adam Fourney, Besmira Nushi, Penny Collisson, Jina Suh, Shamsi Iqbal, Paul N. Bennett, Kori Inkpen, Jaime Teevan, Ruth Kikin-Gil, and Eric Horvitz. 2019. Guidelines for Human-AI Interaction. In *Proceedings of the 2019 CHI Conference on Human Factors in Computing Systems*. ACM, Glasgow Scotland UK, 1–13. <https://doi.org/10.1145/3290605.3300233>
- [4] Apple. 2023. Maps - Apple. <https://www.apple.com/maps/>
- [5] The MARTA Army. [n. d.]. Operation Bus Stop Census. <https://www.martaarmy.org/stop-census>
- [6] Saurav Dev Bhatta and Matthew P. Drennan. 2003. The economic benefits of public investment in transportation: A review of recent literature. *Journal of Planning Education and Research* 22, 3 (2003), 288–296. ISBN: 0739-456X Publisher: Sage Publications Thousand Oaks, CA.
- [7] Michael Duan, Shosuke Kiami, Logan Milandin, Johnson Kuang, Michael Saugstad, Maryam Hosseini, and Jon E. Froehlich. 2022. Scaling Crowd+AI Sidewalk Accessibility Assessments: Initial Experiments Examining Label Quality and Cross-city Training on Performance. In *The 24th International ACM SIGACCESS Conference on Computers and Accessibility*. ACM, Athens Greece, 1–5. <https://doi.org/10.1145/3517428.3550381>
- [8] Google. 2023. Google Maps. <https://www.google.com/maps>
- [9] Andrea Hamre and Ralph Buehler. 2014. Commuter Mode Choice and Free Car Parking, Public Transportation Benefits, Showers/Lockers, and Bike Parking at Work: Evidence from the Washington, DC Region. *Journal of Public Transportation* 17, 2 (June 2014), 67–91. <https://doi.org/10.5038/2375-0901.17.2.4>
- [10] Kotaro Hara, Shiri Azenkot, Megan Campbell, Cynthia L. Bennett, Vicki Le, Sean Pannella, Robert Moore, Kelly Minckler, Rochelle H. Ng, and Jon E. Froehlich. 2015. Improving Public Transit Accessibility for Blind Riders by Crowdsourcing Bus Stop Landmark Locations with Google Street View: An Extended Analysis. *ACM Transactions on Accessible Computing* 6, 2 (March 2015), 1–23. <https://doi.org/10.1145/2717513>
- [11] Kotaro Hara, Vicki Le, and Jon Froehlich. 2013. Combining crowdsourcing and google street view to identify street-level accessibility problems. In *Proceedings of the SIGCHI Conference on Human Factors in Computing Systems (CHI '13)*. Association for Computing Machinery, New York, NY, USA, 631–640. <https://doi.org/10.1145/2470654.2470744>
- [12] Kotaro Hara, Jin Sun, Robert Moore, David Jacobs, and Jon Froehlich. 2014. Tohme: detecting curb ramps in google street view using crowdsourcing, computer vision, and machine learning. In *Proceedings of the 27th annual ACM symposium on User interface software and technology (UIST '14)*. Association for Computing Machinery, New York, NY, USA, 189–204. <https://doi.org/10.1145/2642918.2647403>
- [13] Maryam Hosseini, Mikey Saugstad, Fabio Miranda, Andres Sevtsuk, Claudio T. Silva, and Jon E. Froehlich. 2022. Towards Global-Scale Crowd+ AI Techniques to Map and Assess Sidewalks for People with Disabilities. *arXiv preprint arXiv:2206.13677* (2022).
- [14] Junehyung Jeon and Ayoung Woo. 2023. Deep learning analysis of street panorama images to evaluate the streetscape walkability of neighborhoods for subsidized families in Seoul, Korea. *Landscape and Urban Planning* 230 (Feb. 2023), 104631. <https://doi.org/10.1016/j.landurbplan.2022.104631>
- [15] Jiyun Lee, Donghyun Kim, and Jina Park. 2022. A Machine Learning and Computer Vision Study of the Environmental Characteristics of Streetscapes That Affect Pedestrian Satisfaction. *Sustainability* 14, 9 (Jan. 2022), 5730. <https://doi.org/10.3390/su14095730> Number: 9 Publisher: Multidisciplinary Digital Publishing Institute.
- [16] Todd Litman. 2012. *Evaluating public transportation health benefits*. Victoria Transport Policy Institute Victoria, BC, Canada.
- [17] Gerhard Neuhold, Tobias Ollmann, Samuel Rota Bulo, and Peter Kontschieder. 2017. The Mapillary Vistas Dataset for Semantic Understanding of Street Scenes. In *2017 IEEE International Conference on Computer Vision (ICCV)*. IEEE, Venice, 5000–5009. <https://doi.org/10.1109/ICCV.2017.534>
- [18] National Association of City Transportation Officials. [n. d.]. Stations & Stops | National Association of City Transportation Officials. <https://nacto.org/publication/transit-street-design-guide/stations-stops/>
- [19] Roboflow. 2023. Roboflow: Give your software the power to see objects in images and video. <https://roboflow.com/>
- [20] Manaswi Saha, Michael Saugstad, Hanuma Teja Maddali, Aileen Zeng, Ryan Holland, Steven Bower, Aditya Dash, Sage Chen, Anthony Li, Kotaro Hara, and Jon Froehlich. 2019. Project Sidewalk: A Web-based Crowdsourcing Tool for Collecting Sidewalk Accessibility Data At Scale. In *Proceedings of the 2019 CHI Conference on Human Factors in Computing Systems*. ACM, Glasgow Scotland UK, 1–14. <https://doi.org/10.1145/3290605.3300292>
- [21] Wayne Sarasua, Robert Awuah-Baffour, Bradley University, Mark Fawley, TRW, Carlton Byars, MARTA, Jeffery Orton, and Utah Transit Authority. 1997. Design and Development of a Bus Stop Inventory to Support an Intelligent Transportation System: The MARTA Experience. *Journal of Public Transportation* 1, 4 (Dec. 1997), 61–80. <https://doi.org/10.5038/2375-0901.1.4.4>
- [22] Ultralytics. 2023. Home - Ultralytics YOLOv8 Docs. <https://docs.ultralytics.com/>
- [23] Ultralytics. 2023. Train. <https://docs.ultralytics.com/modes/train>
- [24] King County Washington. 2017. Transit Stops for King County Metro / transitstop point. <https://gis-kingcounty.opendata.arcgis.com/datasets/kingcounty::transit-stops-for-king-county-metro-transitstop-point/about>
- [25] Galen Weld, Esther Jang, Anthony Li, Aileen Zeng, Kurtis Heimerl, and Jon E. Froehlich. 2019. Deep Learning for Automatically Detecting Sidewalk Accessibility Problems Using Streetscape Imagery. In *The 21st International ACM SIGACCESS Conference on Computers and Accessibility*. ACM, Pittsburgh PA USA, 196–209. <https://doi.org/10.1145/3308561.3353798>
- [26] Haiying Zhou, Kun-Mean Hou, Decheng Zuo, and Jian Li. 2012. Intelligent Urban Public Transportation for Accessibility Dedicated to People with Disabilities. *Sensors* 12, 8 (Aug. 2012), 10678–10692. <https://doi.org/10.3390/s120810678> Number: 8 Publisher: Molecular Diversity Preservation International.